

MK JOB SHOW

SHOW GUIDE





19 & 20 SEPTEMBER 2025

Main Sponsor





University of Bedfordshire

See our exhibitors
job roles here



SPONSORS



EXHIBITORS



FREE ENTRY - REGISTER AT WWW.MKJOBSHOW.CO.UK



Sikla provides innovative solutions for modular steel framing and pipework supports for industrial construction projects across the Power Generation, Chemical, Data Centres, Pharmaceutical and Building Services sectors.

Founded over 55 years ago in Germany, the Sikla Group employs more than 900 staff across Europe, North America, Oceania and Middle East with products sold in over 40 countries worldwide through Sikla subsidiaries and official distributors.

Develop your career at Sikla. With career plans based on a long-term strategy, built on teamwork, growth and development in:

- Sales & Customer Service
- Warehouse & Fabrication
- HR Administration

Join Sikla and become part of a dynamic and diverse team, where your ideas and talent are valued!



SCAN THE QR CODE
TO VIEW
OUR VACANCIES



Sikla UK Limited,
Unit 3 Newmarket Court,
Milton Keynes, MK10 0AG

+44 (0) 1908 281 052
recruitment@sikla.co.uk



SPACENK

If you love beauty,
you're in the right place.

As the ultimate curator of over 100 of the most in-demand, highly innovative and boundary-pushing beauty brands, we are the go-to destination for worldwide beauty discovery.

Together through our neighbourhood stores, online presence and loyalty scheme, Space NK has built a flourishing community in which to discover beauty. The customer is at the heart of everything we do, and we will always endeavour to offer everything they need to help them explore, experiment, and enjoy our brands.



Scan here to find out our
latest job opportunities





THOUSANDS OF JOBS ARE AVAILABLE AT THE MK JOB SHOW

The MK Job Show is taking place at Middleton Hall, centre:mk, Milton Keynes on Friday 19 & Saturday 20 September.

Welcome to the MK Job Show and thank you for visiting us.

We hope you have a successful time looking for your next opportunity. The MK Job Show is open on 19 & 20 September from 11.00 am – 5.00pm on both days.

We would like to thank all our sponsors and exhibitors for taking part. Our sponsors include ATL, BPHA, Connect to Work, Flexo, REISER, Marshall.

The Bedford College Group, Counter Terrorism Police, South Midlands Authorities, Synergy, Wizz, PJ Care, Thyssenkrupp and the Main Sponsor University of Bedfordshire.

Exhibitors include: Angard Staffing, Army, ATL Ltd, Au Pair in America, AVON, Bedfordshire Police, Beyond Disability, bpha, Brainkind, Career Clinic Net, Counter Terrorism Policing.

Cranswick, Croci Collective, DEAF PROGRESS, Early Years Careers, Emsee Living, Endress + Hauser, Five Rivers Child Care, Flexzo Teach, Future Connect Training & Recruitment, Group 1 Auto, Ikea.

Job Centre, Lidl, London Northwestern Railway, Marshall Group, Medik8, MK Driver Training, NQA, Olymp Group, Plockmatic, PJ Care, Professional Careers Service, RAF, Reiser (UK) Ltd, Sikla, Silver Lining Fostering, Silverstone, SniffJob

(CVP CHAT LTD), South Midlands Authorities - Connect to Work Zone.

SpaceNK, Sure Start Fostering Agency, Synergy Flavours, The Bedford College Group, The Open University, Thyssenkrupp Materials UK Ltd, University of Bedfordshire, Wizz Air UK Ltd, Woburn Coffee House

We have a series of seminars throughout both days on our exhibition stage.

For a full list and times of seminars please scan this QR Code.





Grow with us

At Emsee Living, we don't just provide care, we create safe, nurturing homes where children can heal, grow and thrive. Our focus is on giving vulnerable children the stability, support and sense of belonging they deserve.

Every day, our teams work with compassion and purpose to build brighter futures, one child at a time. If you're searching for a career where your presence truly matters, where you can offer consistency, inspire hope and be a positive role model then we'd love to hear from you.

Whether you're experienced in care or new to the sector, we offer full training, continuous support and real opportunities to grow with us.

**Come and see us
at Stand 62 to
find out more.**



**Emsee
Living**

To find out more:

✉ careers@emseeliving.co.uk



emseeliving.co.uk



linkedin.com/company/emsee-living/



Do you want
a career where
**you can make
a difference?**

Then why not join our team?



From Housing to HR,
Maintenance to IT,
Customer Service to
Development and
much more.

Join us at the MK Job
Show to find out more
about the variety of
careers on offer or visit
bpha.org.uk/jobs

READY TO WORK? WE'RE READY TO HELP.

Struggling to find a job? Are health conditions, disabilities, or personal disadvantages holding you back? The Connect to Work programme is here for you!



SCAN THE QR CODE
VISIT OUR WEBSITE.

www.southmidlands.org.uk/connect-to-work/

**South Midlands
Authorities**

CONNECT TO WORK
Funded by **UK Government**



COUNTER
TERRORISM
POLICING

COUNTER TERRORISM POLICING IS **MORE** **THAN MEETS THE EYE**

We have a range of roles spanning the UK
From finance to project management,
data analysis to communications your skills
could help keep people safe.

Join Counter Terrorism Policing.
Apply for your next role today.







FOR MORE
INFORMATION
TRAINING AND
RECRUITMENT

OUR SERVICES

Sign Language Interpretation

In-person interpretation for meetings, events, conferences, etc. Remote/virtual sign language interpretation for online meetings or calls.

Deaf Awareness Training

In-person interpretation for meetings, events, conferences, etc. Remote/virtual sign

language interpretation for online meetings or calls.

Consultation on Accessibility

Assessing and advising businesses or organisations on making their spaces more accessible to the deaf and hard-of-hearing community (e.g., audio systems, visual alarms, accessible signage).

Sign Language Classes

Offering beginner, intermediate, or advanced sign language courses for individuals or groups interested in learning BSL (British Sign Language).

Employment Support for the Deaf

Helping deaf individuals with job

placement, CV building, and workplace integration.

Community Outreach & Events

Organising or participating in events that support the deaf community and raise awareness of accessibility and inclusion.

Deaf Education Support

Collaboration with educators to ensure effective communication and inclusive learning environments.

Event Accessibility Services

Captioning services for public or private events, including conferences, workshops, or performances.

Communication Support

One-on-one sign language lessons or communication coaching for families, individuals, or businesses who want to better communicate with deaf individuals.

8

SEPTEMBER 2025 MK JOB SHOW

Do something big, work with small children.

Working in early years and childcare is unique and rewarding. You'll work with young children, providing care and early education that helps give them the best start in life.



Work in a nursery or pre-school

From entry level roles to qualified positions as a nursery assistant, room leader or early years teacher, you'll join a team and make a real difference by providing care and education to children under 5.



Become a childminder

As a childminder, you'll provide personalised early education and childcare to small groups of children of different ages. You'll have the freedom to run your own business and work flexibly.



Work in before or after school clubs

From sports to crafts to music, share your passion and provide wraparound care for primary school children. A great role if you're looking for part-time or term-time only work.

Get qualified on the job

Whether you're leaving school or looking to change careers, you can train on the job with an early years apprenticeship. Requiring no previous experience, you'll be employed by a nursery or pre-school and gain valuable skills and a recognised qualification - all while earning a salary!



**Search:
Early Years Careers**



DRIVE YOUR CAREER

GROUP 1 AUTOMOTIVE

As one of the leading Automotive retail groups in the UK, we offer rewarding careers and opportunities for growth.

We value our colleagues, invest in training & development and we welcome the chance to meet you to demonstrate how we can support your future career.

GROUP 1



Join GB's fastest growing supermarket



From local stores to the world's biggest Lidl Warehouse in Luton, we're full of opportunities.



Competitive salary



Paid holiday



Employee discount



Pension scheme



Wellbeing support



Plus more perks



Apply today at
lidlcareers.co.uk

We're
hiring!





Zero Fees Now, Zero Fees Forever.

Helping schools cut out agencies and take back control. Flexzo Teach helps you hire directly, with zero placement fees, less admin, and full transparency.



Scan the QR code
to arrange a demo



Ai Job Matching



Automated Compliance



Ai Shift Matching



Automated Timesheets



Automatic Availability Updates

www.flexzoteach.ai



Join the Marshall Manufacturing Team.

Passion becomes precision at Marshall Amplification. Here, every product we make is crafted to take centre stage. You'll be joining a team as legendary as the era-defining sound delivered by our amps.

We are currently hiring for our Manufacturing Department. Come and shape the future of Marshall's signature sound in our world famous Bletchley factory.

Whether you're assembling intricate electronics, working wood in our mill, or applying the finishing touches that define our brand's look and feel, your work can continue our rock 'n' roll legacy.

Here's what to expect:

- Build with purpose – from electronics to woodworking to finishing.
- Collaborate closely across teams to ensure top-quality craftsmanship.
- Value precision, care, and continuous improvement.

We are committed to fostering a diverse and inclusive workplace, where every team member is valued, supported, and encouraged to grow.

Welcome to the home of loud.
Apply now.



LEARN MORE

Wondering what it's like to work at IKEA?

Let's find out



You can choose your own path

At IKEA, the most loved Swedish home furnishing brand, we believe that when you **choose what you want to do**, you **enjoy working more**.

That's why you get opportunities to **explore different roles, change between functions** and get **new experiences to drive your career forward**. So come and join us. Because no matter which path you choose **with IKEA**, it **will always be a fun ride**.



© Inter IKEA Systems B.V. 2020 - 2022



Scan our QR code
to find out more





a **kiwa** company

YOUR GLOBAL CERTIFICATION BODY



Specialising in certification and training for:

- Quality (ISO 9001)
- Environment (ISO 14001)
- Medical Devices (ISO 13485)
- Sustainability
- Business Continuity (ISO 22301)
- Health & Safety (ISO 45001)
- Information Security (ISO 27001)
- Energy (ISO 50001)
- Aerospace Quality (AS9100)
- Automotive Quality (IATF 16949)
- Integrated Systems



60,000
CERTIFICATES
GLOBALLY



100%
TRANSPARENT
— FEES —

AVERAGE
CUSTOMER
PARTNERSHIP



OVER **100**

OPERATING
COUNTRIES

NQA, Warwick House, Houghton Hall Park, Houghton Regis,
Dunstable, Bedfordshire LU5 5ZX, United Kingdom

T: 0800 052 2424 E: info@nqa.com @nqaglobal

www.nqa.com

Medik8®

RESULTS WITHOUT COMPROMISE

Certified



Corporation

Founded in 2009 by UK scientists, Medik8 is a British dermatological skincare brand, globally renowned for age-defying heroes that deliver results without compromise. We are always seeking exceptional talent to join our team, if you're eager to be part of a collaborative environment and contribute to our mission of transforming the skincare landscape, we want to hear from you.



OUR HEAD OFFICE IN ELSTREE RECRUITS ACROSS:

Customer | Sales | Marketing
E-commerce | Finance | Data & Tech | People

OUR INNOVATION CENTRE IN AYLESBURY RECRUITS ACROSS:

Research & Development | Supply Chain
Manufacturing | Engineering | Logistics | Quality

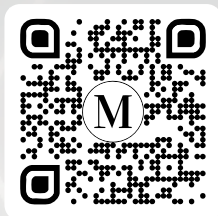


WHAT WE OFFER:

Competitive Pay | Annual Bonus
75% Product Discount | Career Progression
Up-Skilling Support | 25 Days Holiday
Private Medical Insurance | Perkbox Rewards
Modern Facilities & Onsite Parking



Apply by scanning the code







CAREER POWERED EDUCATION

DEGREES POWERED BY INDUSTRY KNOW-HOW

- » Part-time courses
- » Short professional courses
- » Multiple start points through the year
- » Initial Foundation Year to prepare for university
- » Generous scholarships worth up to £2,500 a year

Apply now at beds.ac.uk



RE-THINK YOUR TALENT SEARCH

Looking for a cost-effective way to recruit reliable staff while building a more inclusive and resilient workforce? Connect to Work is offering employers like you a unique opportunity to access motivated, work-ready candidates who are supported to succeed from day one.



**SCAN THE QR CODE TO
VISIT OUR WEBSITE.**

www.southmidlands.org.uk/connect-to-work/

**South Midlands
Authorities**

CONNECT TO WORK
Funded by **UK Government**



PJ Care

WE ARE HIRING

**COME SEE
US AT OUR
STAND**

Specialist Neurological & Neuro-Rehabilitation Care

PJ Care is a leading specialist care provider, supporting adults with complex neurological conditions in our specialised care centres. We deliver high-quality, multidisciplinary care tailored to each individual, working closely with families, charities, and the NHS to ensure the best possible outcomes.

At the heart of everything we do are our core values: Care, Compassion, and Commitment. Values that guide every decision and interaction across our homes.

But our commitment doesn't stop with residents, we're just as passionate about the well-being of our staff. We believe in creating a positive, inclusive, and rewarding place to work where everyone feels valued and supported.

Why Work With Us?

We offer a wide range of staff benefits, including:

- Westfield Health & Blue Light Card access
- Regular staff recognition and award ceremonies
- Family fun days at our care centres
- Cultural celebration days and events
- Ongoing training, development & career progression

Whether you're new to care or an experienced professional, you'll be supported every step of the way at PJ Care.

CURRENT VACANCIES



SCAN ME



Plockmatic Group

RELAX...WE TAKE THE STRESS OUT OF YOUR DIGITAL FINISHING



www.plockmaticgroup.com

Job-Oriented Practical Training Program



Our Trainings

- ✓ Bookkeeping & VAT Training
- ✓ Advanced Payroll Training
- ✓ Accounts Assistant Training
- ✓ Final Accounts Training
- ✓ Business Analyst Training



Contact Us:



020 3038 8548



enquiries@professionalcareers-training.co.uk

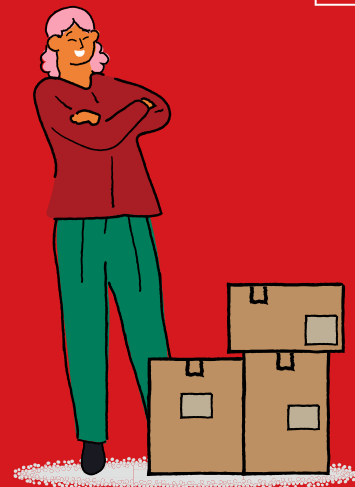




Ready to deliver **MORE?**

Whether you're looking for a seasonal temp or permanent role, we have plenty of opportunities for you to choose from. These include Mail Sorter, Postie, Parcel Delivery Driver, LGV Driver, and more.

Are you ready to be at the forefront of an iconic brand like Royal Mail? Join us and deliver more than just letters and parcels - bring a sense of community and connection straight to your neighbours' doorsteps.



Scan this QR code to find out more

We deliver
MORE





Could You Transform a Child's Life?

You can foster if you are:

- A UK resident.
- Over the age of 21.
- Have a spare bedroom.
- Able to provide a safe, stable, and nurturing environment.

We welcome carers from all backgrounds, whether you're single, married, divorced, in a partnership, or part of the LGBTQ+ community.

To start your foster care journey, fill out the brief enquiry form and a member of our team will get back to you shortly to answer any questions that you may have.

Have you ever thought about opening your heart and home to a child in need? Fostering is a rewarding experience that allows you to make a life-changing difference to vulnerable children, providing them with a safe, loving, and nurturing environment.

Who Can Foster?

You don't need to be a superhero—just someone with love, patience, and a commitment to make a difference.



Ofsted
Outstanding Provider

Contact us today

CALL : 07405 234 222 | 0208 150 7238
07706 348 709 (Sarah)
07548 838 257 (Tanya)

info@silverliningfostering.co.uk
<https://silverliningfostering.co.uk>



YOUR NEW ONE-STOP JOB SHOP



SNIFFJOB.COM

SniffJob is a revolutionary **online platform** that harnesses a powerful **AI Agent** to help you find and apply for real jobs, **fast**

Discover **smarter, safer job searches** today

- ✓ Instantly **spot and avoid** fake, ghost and scam job ads
- ✓ Our AI Agent helps find **real new jobs** for you as they are posted
- ✓ **Generate CVs** and cover letters that are Applicant Tracking System (ATS) friendly **in one click**
- ✓ Use our advanced AI Voice Assistant for quick **hands-free document creation**
- ✓ Free up more of your time and **generate better job opportunities**



Try SniffJob for free

SniffJob was born from my own frustration with fake and scam job ads. After wasting hours on ghost listings, I set out to build an AI tool that protects job seekers and helps them find real opportunities. My goal is to make **your job search** safer and more successful.

Vahid Mahdavi, Founder




SNIFFJOB.COM

Apply for a
Cabin Crew
position with
one of our
upcoming
Assessment
Days

LET'S REACH FOR THE SKY

LET'S
Wizz



Join the Wizz Air
Cabin Crew
in the UK



Foster Carers Urgently Required!

Would you like to make a long-lasting impact on the lives of vulnerable children & young people?



Who are foster carers?

Foster carers are valued individuals who provide a nurturing and secure living environment for children and young people. They work alongside a dedicated and supportive team from **Sure Start Fostering Agency** to transform the lives of these children. In return for their vital role and unwavering commitment, foster carers receive competitive remuneration.



Requirments?

- A spare bedroom to provide a safe and comfortable space.
- A willingness to help children thrive with the support and training we provide



INFORMATION



www.surestartfostering.org.uk



07440 246015
0208 6374 940



Can I foster?

Yes! No matter where you live, we are recruiting foster carer nationwide. We welcome foster families who live in privately rented accommodation, social housing and home owners.



Support & Training

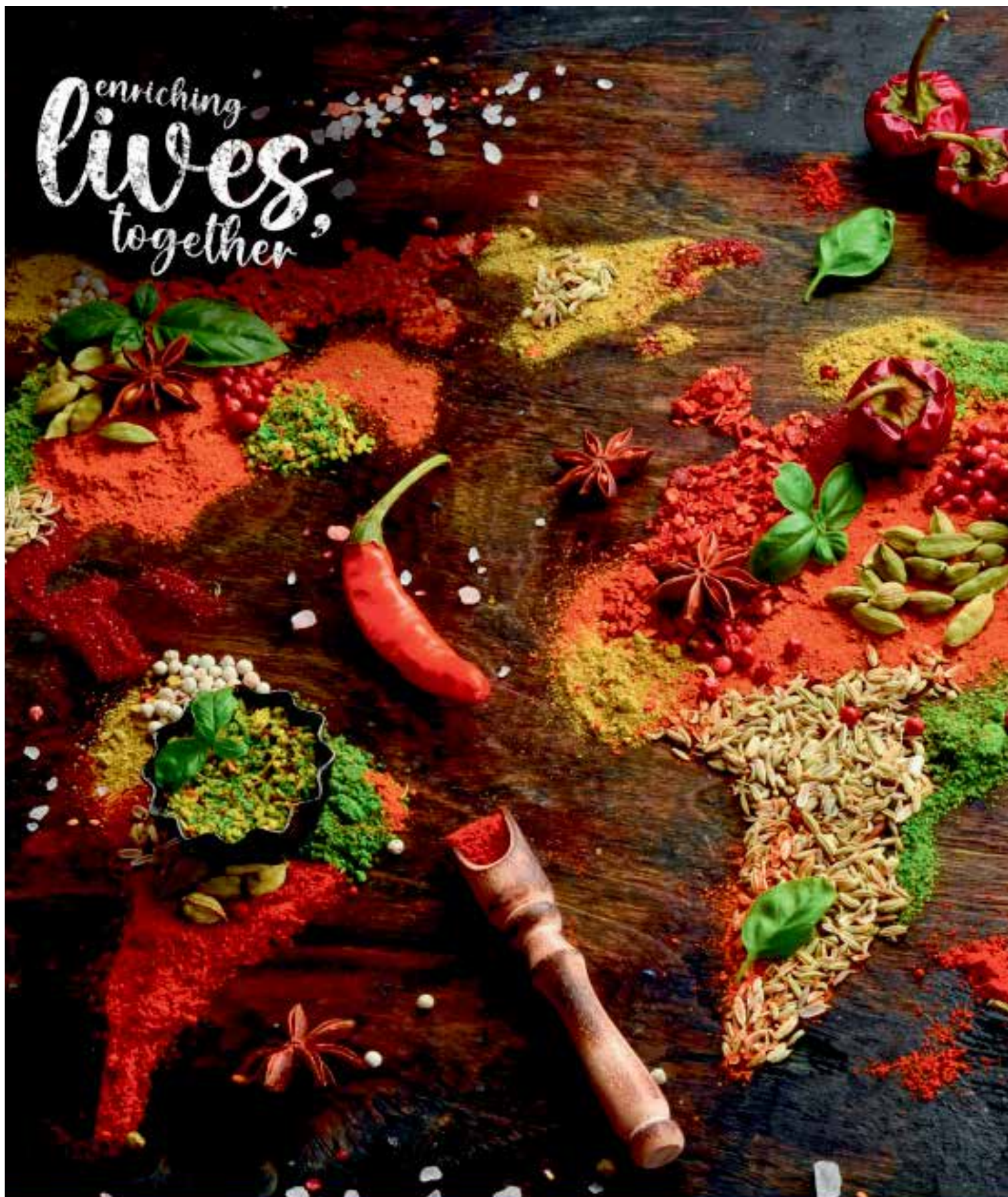
Sure Start Fostering Agency typically provides comprehensive support and training to ensure foster carers are prepared and supported throughout thier journey.




Rewards of fostering

- Personal Growth
- Strengthening Relationship
- Helping the Community
- Fostering Allowances
- Leaving a legacy

enriching
lives,
together



 **SYNERGY®**

 <https://uk.synergytaste.com>





Time for a career change?

Use your **industry skills and experience** to inspire and teach in Further Education.

We are looking for talented individuals who would be interested in **retraining as teaching staff** at our colleges, in the following subject areas:

Engineering, Construction and Building Services,
Business, Health & Social Care, Early Years &
Teaching, Digital Technologies, Land Based &
Animal Studies, Motor Vehicle and
SEND/Additional Learning Support

Meet us at the **19th and 20th September** at the **MK Job Show**.

<https://bedfordcollegigroup.ac.uk/work-for-us/>

#GETINTOTEACHING #SHAREYOURSKILLS

Change your life today

Work with us. The Open University is the UK's largest university, a world leader in flexible part-time education for some 200,000 students.

Study with us. Get ahead and develop your skill set with our range of flexible, online short courses.

Our short courses cover a range of subjects including:

- Languages: short courses for beginners in Spanish, Italian, French, German, Chinese and Arabic
- An introduction to artificial intelligence
- Professional communication strategies and skills for work
- An introduction to intercultural competence
- Developing a coaching culture
- Developing team leader skills
- Managing a budget
- Start your own business



The future is open



Find out more at
open.ac.uk



The Open University is incorporated by Royal Charter (RC 000391), an exempt charity in England & Wales and a charity registered in Scotland (SC 038302). The Open University is authorised and regulated by the Financial Conduct Authority in relation to its secondary activity of credit broking.



ARMY BE THE BEST



**STUDY
WITH US**



Get a Free Laptop



**OLYMP
GROUP**

**WORK
WITH US**



Unlimited Opportunities





#GENERATIONTK

Are you ready to take the next step?

About thyssenkrupp Materials UK

We are an established supplier and a world leader in metal supplies within an array of sectors.

We operate a network of 8 sites within England and Northern Ireland which are:

Preston, Darton, 3 in the West Midlands (Cradley Heath and Birmingham), Milton Keynes and 2 in Northern Ireland.

We are recruiting for:

- Warehouse Operatives
- Production Operatives
- HGV Drivers
- Sales Executives
- Account Support

Why join us?

- Friendly and Inclusive Culture
- Focus on Health, Safety and Wellbeing
- Excellent Career Development
- Company Bonus Scheme
- Lots of Other Great Benefits

engineering.tomorrow.together.

DO YOU LOVE MOTORSPORTS?

TRANSFORM YOUR PASSION INTO A CAREER



Aero Tec Laboratories Ltd (ATL), pioneers of liquid containment systems, invite you to join our esteemed team as a **Cell Production Technician**! No previous experience needed - just **bring your love for motorsport and a thirst for knowledge**, and we'll handle the rest.

FUEL YOUR PASSION

Dive into the thrilling world of motorsport as you help craft essential components for racing vehicles.

HANDS-ON TRAINING

Learn from our expert in-house team to become a skilled Production Technician.

EXCITING BENEFITS

Enjoy competitive pay, bonuses, career growth opportunities, and perks designed to support your well-being and professional development.

FORGE YOUR PATH

Build a career in an industry where ATL is the leading manufacturer of flexible fuel tanks.

ELITE COLLABORATION

Work with renowned motorsport brands on projects shaping the future of racing technology.

MORE OPPORTUNITIES

Looking for other opportunities at ATL? From office roles to quality control, final assembly and more. Explore all roles on our website.

ATL TECHNOLOGY CENTRE
DENBIGH RD
MILTON KEYNES MK1 1DF

LEARN



MORE

ATLLTD.COM/CAREERS
CAREERS@ATLLTD.COM
+44 (0)1908 351700

Reiser provides industry-leading food processing and packaging equipment, sales, service, and support to customers all over the UK.

We cover the whole food industry from sausage, meat, poultry, seafood, and alternative proteins to bakery, dairy, produce, prepared food, and pet food. **Our HQ is based in Milton Keynes.**



Enjoy competitive salaries, great employee benefits and opportunities for professional growth.



Feel confident with full training, support and all the resources you need to be successful.



Work in a fun team atmosphere, with social events and free food samples from our test kitchen!

NEXT EVENT



WWW.MKJOBSHOW.CO.UK